

DREAMER SERIES

fragrance diffuser product manual



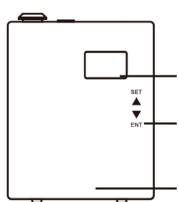
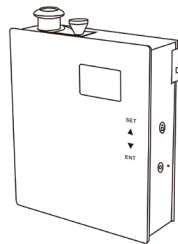
SPECIFICATIONS

Plug and Play

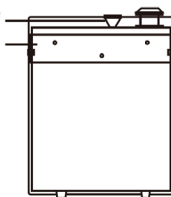
Battery Backup

10 Intensity Levels

Product	Dreamer	Mini Dreamer
Size	10" x 15" x 5"	9" x 11" x 3.5"
Volume	34 fl oz	17 fl oz
Coverage	1929 sf	1215 sf



Handle
Mounting bracket
LCD monitor
Touch button
Front panel



Nebulizer
Unlock
DC connector

What's Included

Be sure the packaging is complete when you first open it. If anything is missing please contact customerservice@azairscent.com



Plug



Bottle



PU tube



Manual



Connector



Mounting bracket



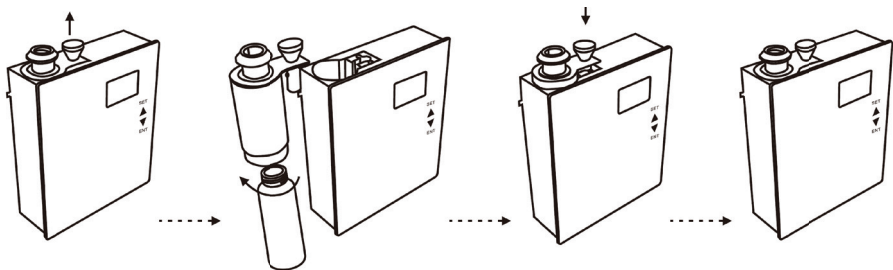
Gasket



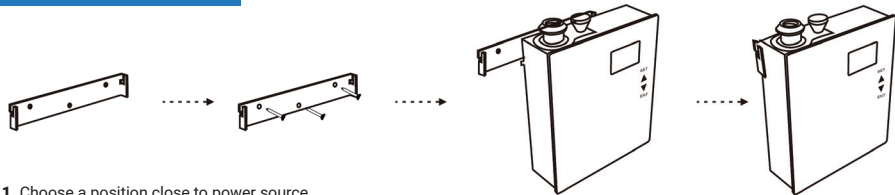
PTFE tape

FILL FRAGRANCE

1. Insert key.
2. Rotate key 10 degrees clockwise to unlock.
3. Unscrew and take out the atomized head. Fill with fragrance.
4. Insert the atomized head and bottle.
5. Take out key.



MOUNTING



1. Choose a position close to power source
2. Fasten mounting bracket to wall with included hardware.
3. Hang the machine.

- **DO NOT SET UNITS ON FLOOR.** They must be mounted or the unit could tip over and damage the floor and the unit itself.
- **NOT RECOMMENDED** to hang unit over 24 inches off the ground.
- Keep diffusion path clear. **DO NOT** mount behind curtains.

HOW TO OPERATE

INTENSITY AND CONSUMPTION

Grade	G1	G2	G3	G4	G5
Working(s)	40s	80s	120s	160s	200s
Stop(s)	400s	360s	320s	280s	240s
Grade	G6	G7	G8	G9	G10
Working(s)	240s	280s	320s	360s	400s
Stop(s)	200s	160s	120s	80s	40s

▲ Intensity Up ▼ Intensity Down

NOTES

1. Above data is based on standard test oil.
2. Consumption may differ based on grade and oil.

CLEANING DIFFUSER

To protect the life of your diffuser and ensure optimal performance, be sure to clean your diffuser when you **refill the bottle with fragrance, change fragrances or you notice the atomization volume goes weak.**

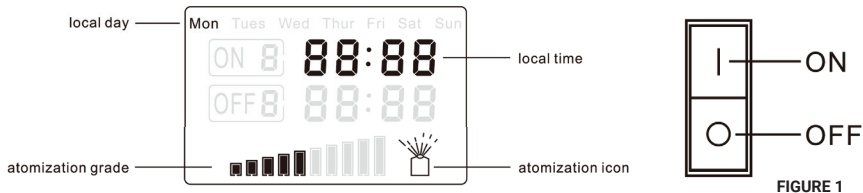
Steps to Clean:

1. Remove fragrance bottle and diffuser head
 2. Unscrew fragrance bottle from diffuser head
 3. Fill 15% of the fragrance bottle with isopropyl alcohol, reattach to diffuser and diffuse 5-10 minutes
 4. Dispose of alcohol, air out the diffuser head and bottle and replace with fragrance
-

PLACEMENT RECOMMENDATIONS

- Choose a location where the fragrance can utilize natural airflow.
- Units need to be mounted low on the wall approx 20 inches off the ground.
- It is best to place away from air vents for optimal performance.
- For larger rooms, place your diffuser in a centralized location, next to a power outlet for a more even fragrance diffusion.
- Great for gyms, entry points, models, clubhouses and large spaces.
- Keep the diffuser in an open area. **Do not** place directly behind furniture or anything that can block the flow of fragrance.
- **Do not** mount above 24 inches off the floor.
- **Do not** set on the floor.

PROGRAMMING



Power ON

Connect with power supply, flip ON/OFF switch to ON (Figure 1), machine will power on, display screen will light up showing the time and atomized grade.

Power OFF

Turn switch to OFF (Figure1), machine will power down, display will turn off.

Auto-Lock

If there is no interaction with display, the screen will go to sleep and lock automatically after 1 minute.

Unlock

Touch and hold **SET** for about 5 seconds and wait for beep.
Display screen should turn back on and unlock programming features.

PROGRAMMING

Local Time Setting

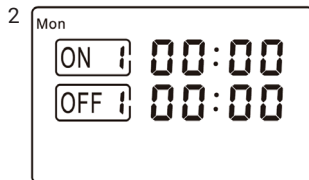
Touch **SET** button (about 5 seconds) till you hear a beep. Touch ▲ to move setting position, touch ▼ to adjust local time. Touch **ENT** to confirm (Figure 1).



Diffusion Time Setting

There are (3) working periods available to be set for everyday.

Touch **SET** button to check out the working periods from Monday to Saturday. Touch ▲ to choose working periods. Touch ▼ to adjust setting numbers.



Day	Mon			Tues				Sat			Sun		
Touch time	1	2	3	4	5	6	...	16	17	18	19	20	21
Available working period	—	—	—	—	—	—		—	—	—	—	—	—
	00:00 — 00:00	00:00 — 00:00	00:00 — 00:00	00:00 — 00:00	00:00 — 00:00	00:00 — 00:00	...	00:00 — 00:00	00:00 — 00:00	00:00 — 00:00	00:00 — 00:00	00:00 — 00:00	00:00 — 00:00

*Note: The first working period is factory defaults with operating time 07:00 and closing 21:00, the rest are all with 00:00. Military Time.

TROUBLESHOOTING

For optimal performance and to avoid any clogging of your diffuser, only use essential oil blends from Phoenicia Essence or Arizona Air-Scent. These fragrances have been carefully developed specifically for our diffusers. Failure to do so may cause damage to your machine.

Always ensure your diffuser is kept in an upright position. Tilting of diffuser may cause oil to leak onto surface.

PROBLEM	POSSIBLE CAUSE	SOLUTION
Device not diffusing	<ul style="list-style-type: none">• Device is in “pause mode” in between cycles• Faulty pump	<ul style="list-style-type: none">• Wait for diffuser to change to “working mode”• Replace pump*
Diffuser spraying liquid	<ul style="list-style-type: none">• Diffuser core is damaged• Machine is tilted or angled	<ul style="list-style-type: none">• Replace diffuser core*• Make sure device is upright
Can hear device working but fragrance mist is low, not visible and cannot smell fragrance	<ul style="list-style-type: none">• Atomization head is blocked• Diffuser core with straw is missing• Pump is damaged	<ul style="list-style-type: none">• Replace fragrance with alcohol and run through diffuser for 5 min• Replace diffuser core w/ straw*• Replace pump*
Fragrance oil is leaking	<ul style="list-style-type: none">• Fragrance bottle is loose• Diffuser is not vertical• Seal is broken or missing	<ul style="list-style-type: none">• Ensure fragrance bottle is fastened straight and tight• Ensure diffuser is standing upright• Replace seal*
Device emitting loud, unusual noise	<ul style="list-style-type: none">• Air pump is loose• Air pump is damaged	<ul style="list-style-type: none">• Re-tighten the pump• Replace air pump*
No display on screen	<ul style="list-style-type: none">• Loss of power• Faulty power source/plug• Display screen is damaged	<ul style="list-style-type: none">• Make sure power is ON• Try different outlet. Replace plug*• Replace display screen*

*For replacement parts, please contact customerservice@azairscent.com



WARNING



1. Atomization icon will display on screen but the machine will not diffuse when it stays on pause time.
2. Touch/tap icons will not operate when diffuser is in lock status.
3. If the display screen not functioning normally, displays unclear or program crash. Reset diffuser by touching **ENT** and hold for 5 seconds until beep.
4. Diffuser must be vertical at all times when fragrance is in bottle when lying flat, tilted or horizontal the fragrance could overflow. This may affect diffuser efficiency if circuit board or pump is contaminated.
5. After installation, please keep the machine vertical. Tilting or placing flat may cause an oil overflow. The machine efficiency may be effected if the circuit board is contaminated.



CAUTION

1. Shall not modify, disassemble or repair the machine arbitrarily. If any failure occurs, please contact **customerservice@azairscent.com**.
2. Do not damage the power cord, force to bend, yank, heavy load, clip or reprocess.
 - Do not use the AC plug when it is damaged or not compatible with socket
 - Do not wet the machine or AC plug
 - Do not use overloaded power socket, wire or broken plug
3. Do not touch the wire or product shell during lighting/thunderstorms.
4. Do not disassemble the machine when it is operating.